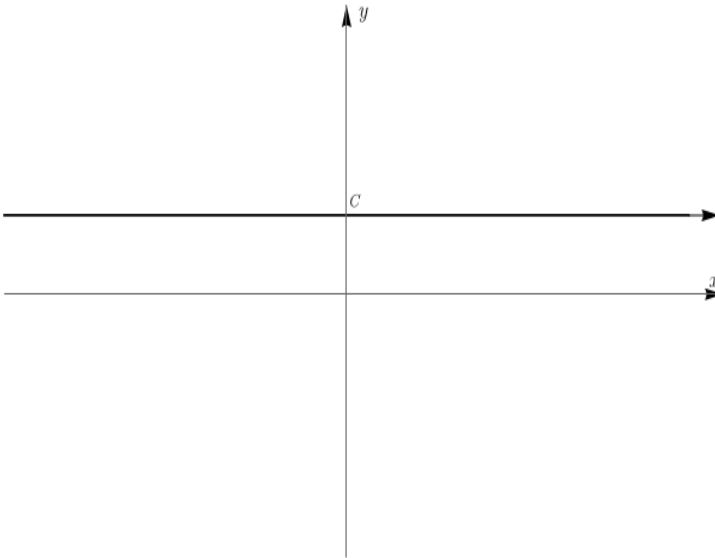
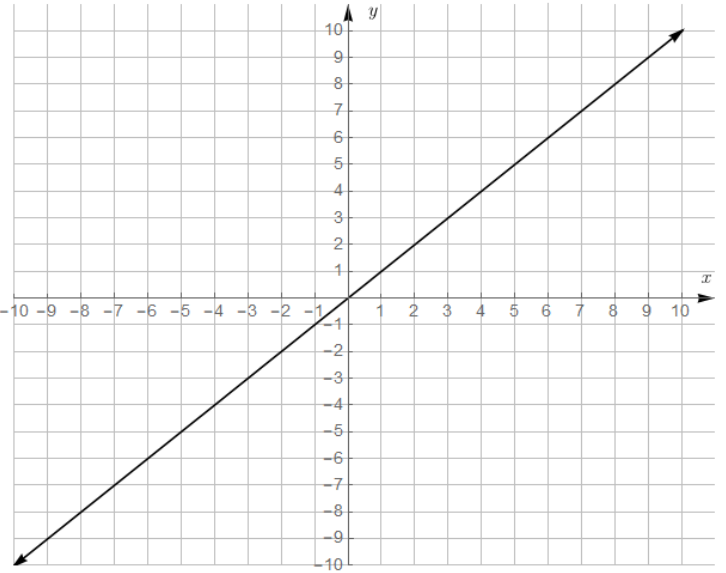


# Section 1.6: Families of Functions

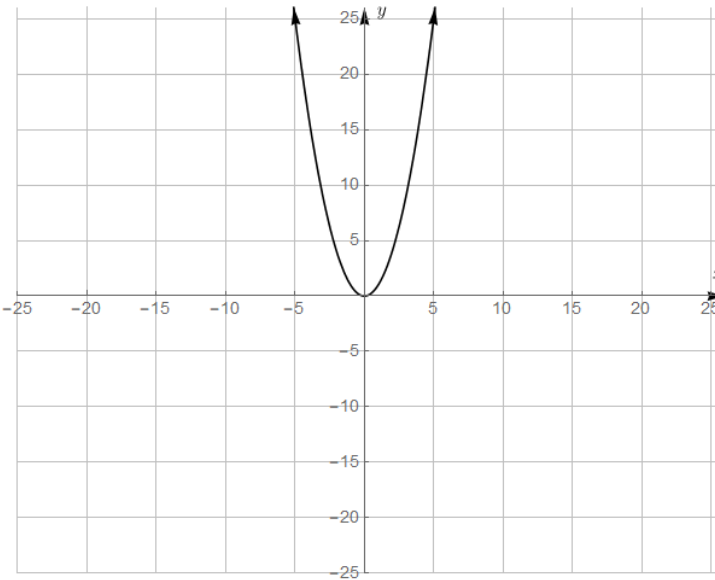
Constant Function:  $f(x) = c$



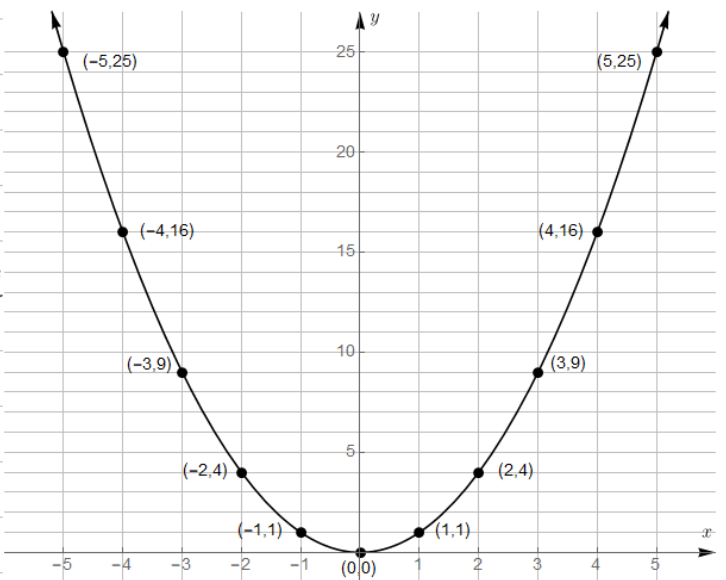
Identity Function:  $f(x) = x$



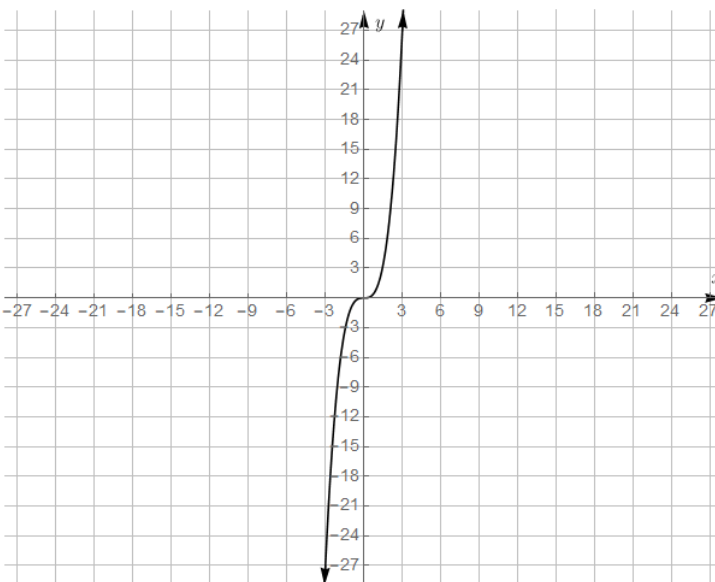
Quadratic Function:  $f(x) = x^2$



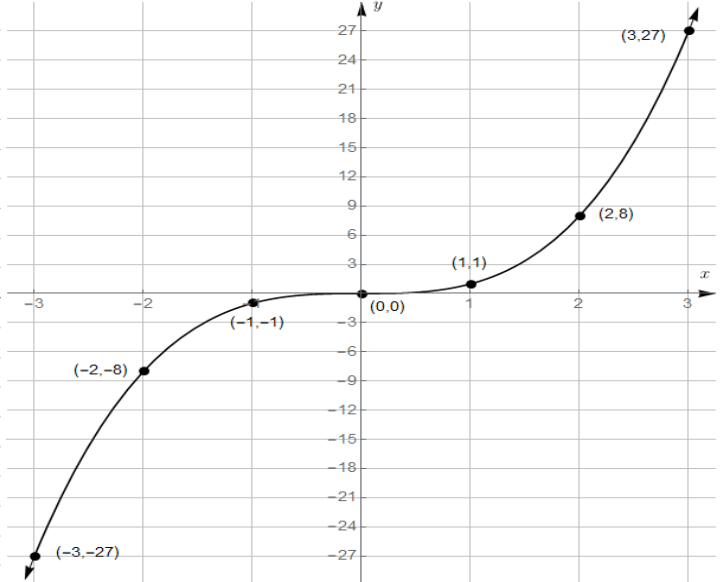
Quadratic Function:  $f(x) = x^2$



Cubic Function:  $f(x) = x^3$



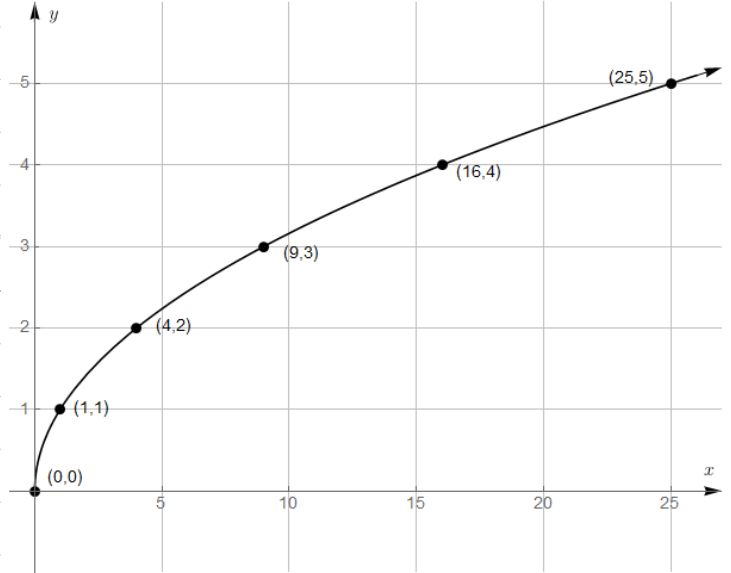
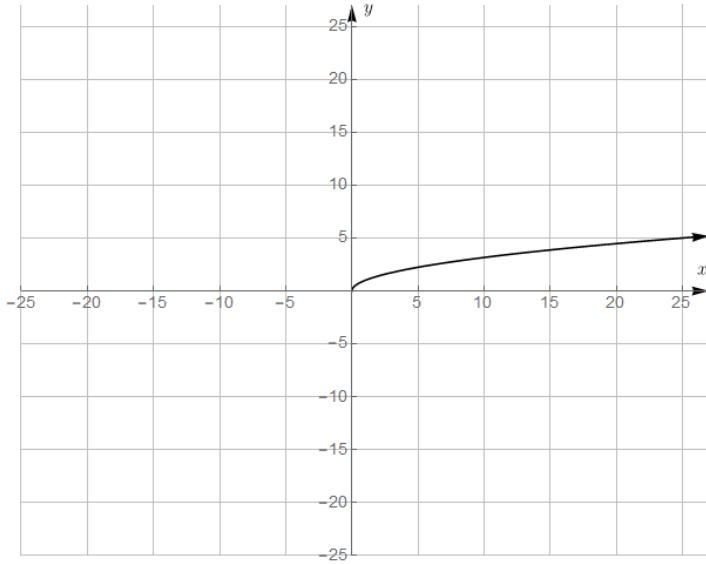
Cubic Function:  $f(x) = x^3$



# Section 1.6: Families of Functions

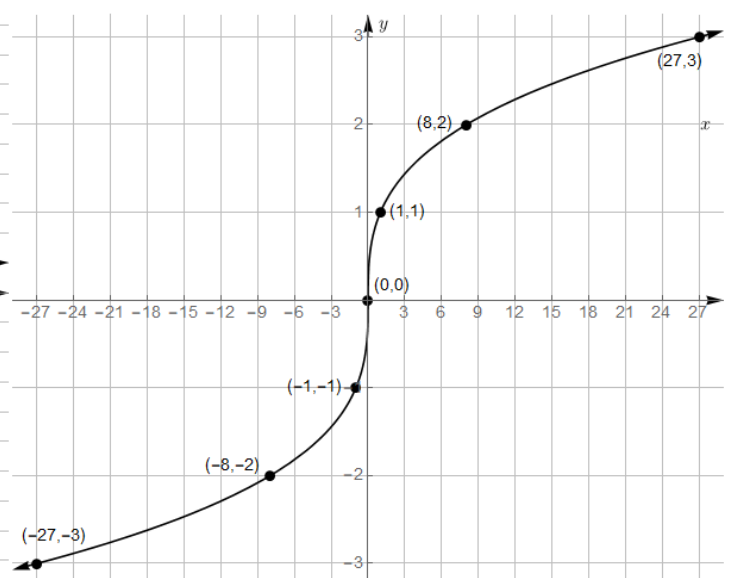
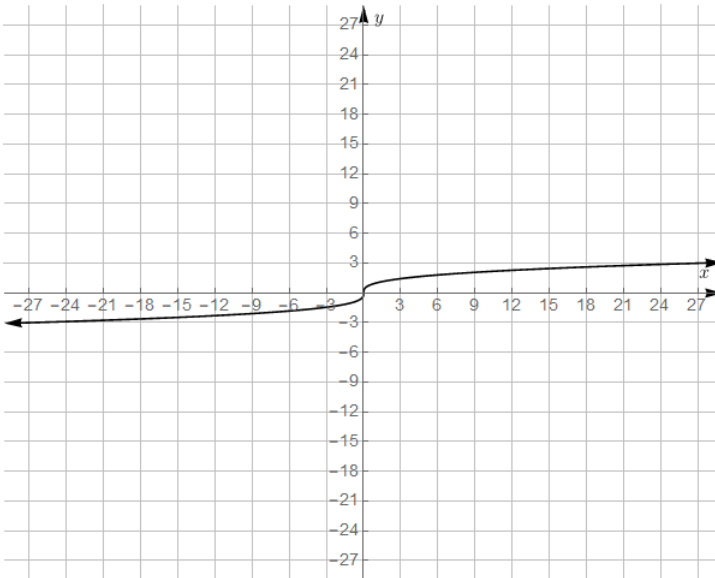
Square Root Function:  $f(x) = \sqrt{x}$

Square Root Function:  $f(x) = \sqrt{x}$



Cube Root Function:  $f(x) = \sqrt[3]{x}$

Cube Root Function:  $f(x) = \sqrt[3]{x}$



Absolute Value Function:  $f(x) = |x|$

Reciprocal Function:  $f(x) = \frac{1}{x}$

